

# Future Trends

## IN LAW ENFORCEMENT

PRESENTED TO THE GOVERNMENT SERVICES COMMITTEE  
TAXATION & BUDGET REFORM COMMISSION

ASSISTANT COMMISSIONER MARK ZADRA  
FLORIDA DEPARTMENT OF LAW ENFORCEMENT

AUGUST 21, 2007



# Today's Presentation

- What are the factors that influence law enforcement?
- What do we know from where we have been?
- How will we meet the demands of the future?

# Influences on Law Enforcement

A row of police cars parked in a lot, viewed from a low angle. The cars are dark-colored, and their blue and red emergency lights are visible on the roofs. The image is slightly blurred, giving it a sense of depth.

**CUSTOMERS**

**CLIMATE**

**CRIMINAL ELEMENT**



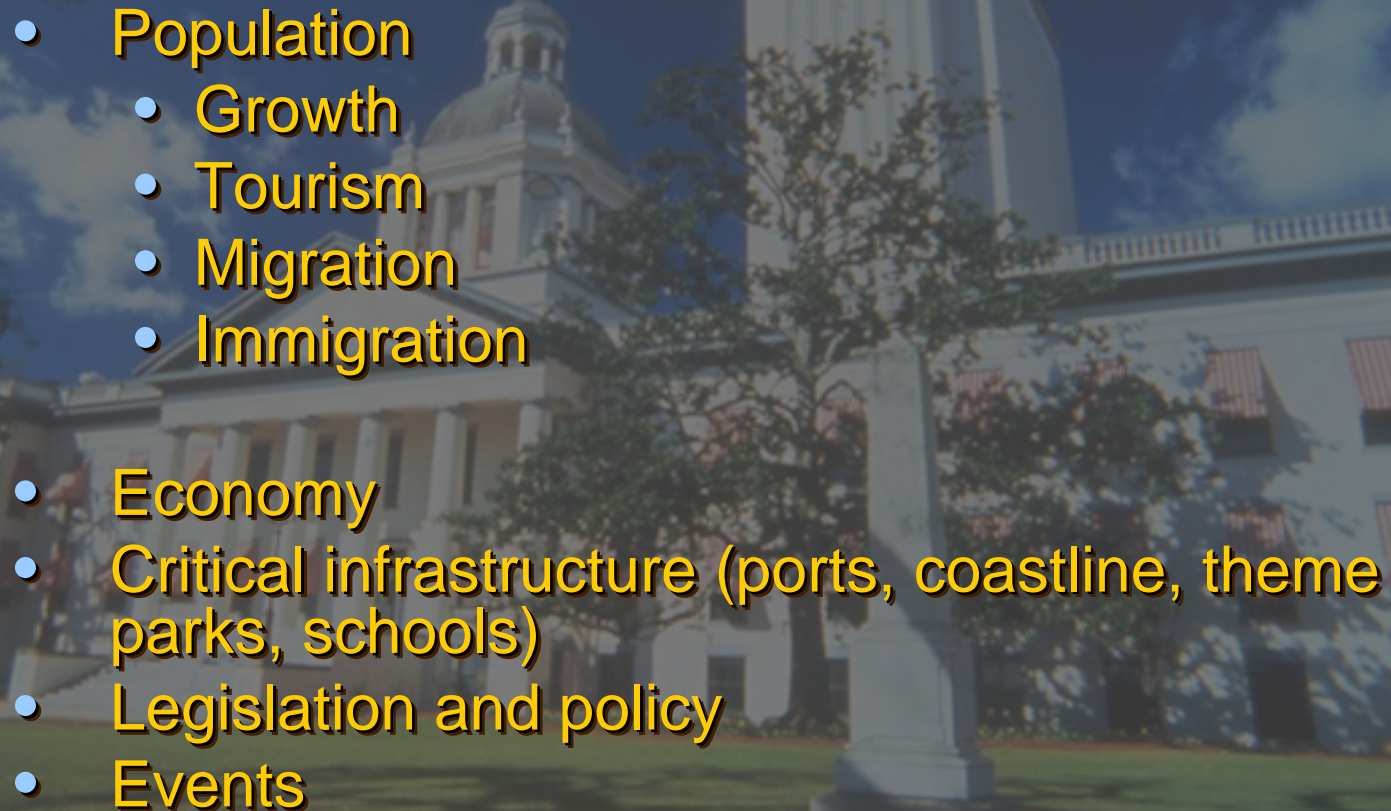
# Influences on Law Enforcement

## 1. CUSTOMERS

- Criminal Justice Agency Demands
  - Specialized support and training
  - Human Resources
  - Fast, seamless interagency communication
  - Adequate funding levels
- Public Demands
  - Serve and protect
  - Effectively investigate
  - Provide safety information
  - Ensure privacy and civil liberties

# Influences on Law Enforcement

## 2. CLIMATE

- Population
    - Growth
    - Tourism
    - Migration
    - Immigration
  - Economy
  - Critical infrastructure (ports, coastline, theme parks, schools)
  - Legislation and policy
  - Events
- 

# Influences on Law Enforcement

## **3. CRIMINAL ELEMENT**

- Types of crimes
- The way crimes are perpetrated (technology, street crimes, organized)
- Where crimes are committed (globalization)
- Who is committing the crime





**What do we know  
from where we have  
been?**

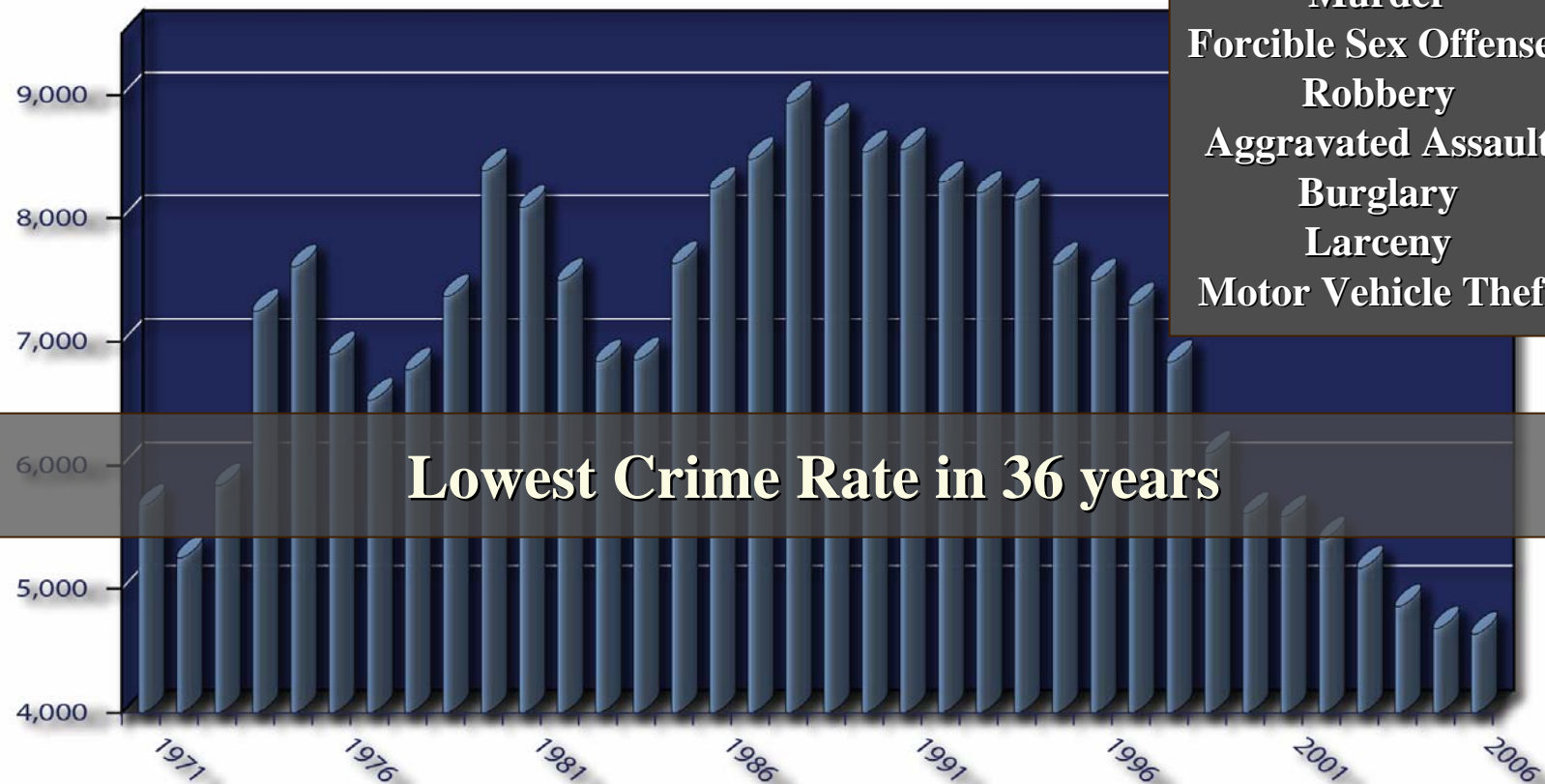
[Clip here of FSB video](#)

# Portrait of Florida

STANDARD INDEX CRIME RATE  
1971 - 2006

## Index Crimes

Murder  
Forcible Sex Offenses  
Robbery  
Aggravated Assault  
Burglary  
Larceny  
Motor Vehicle Theft



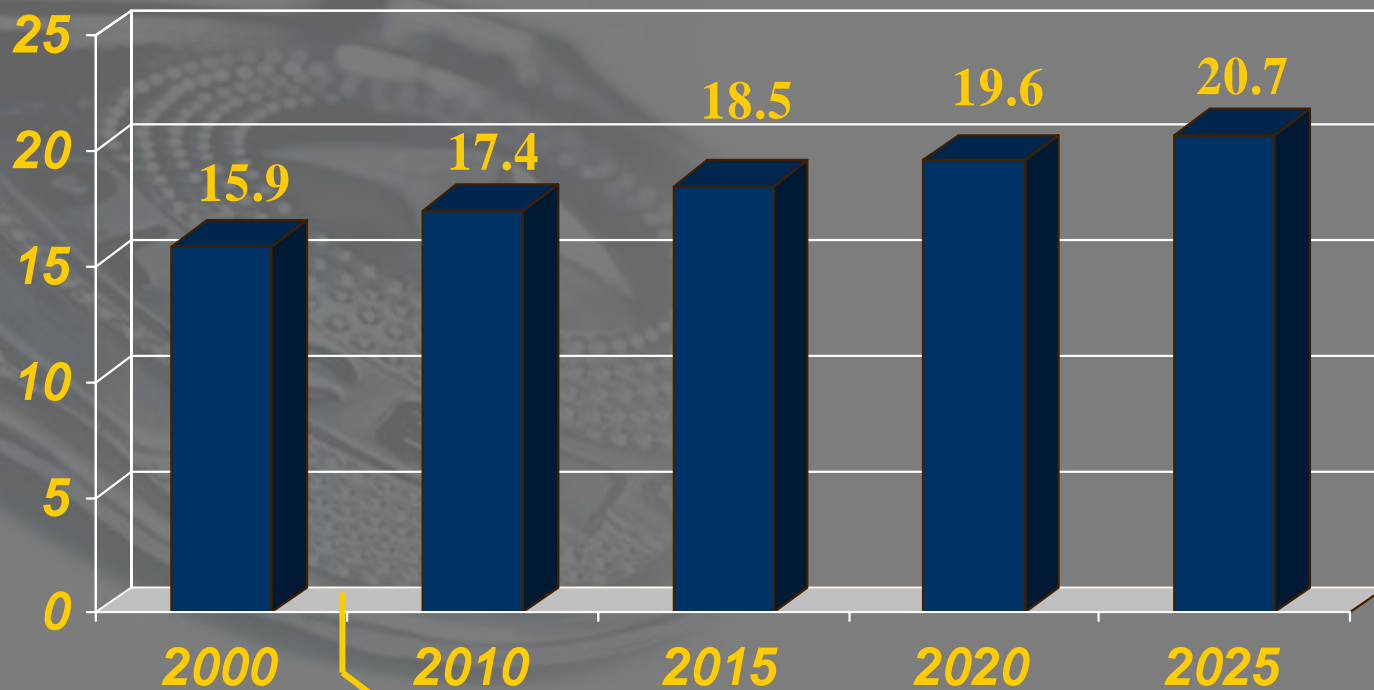
Lowest Crime Rate in 36 years



# Florida's Population:

## 20.7 MILLION IN 2025

*Population in (millions)*



Source: *Business Florida 2005*

# National Crime Costs

## \$428 BILLION A YEAR

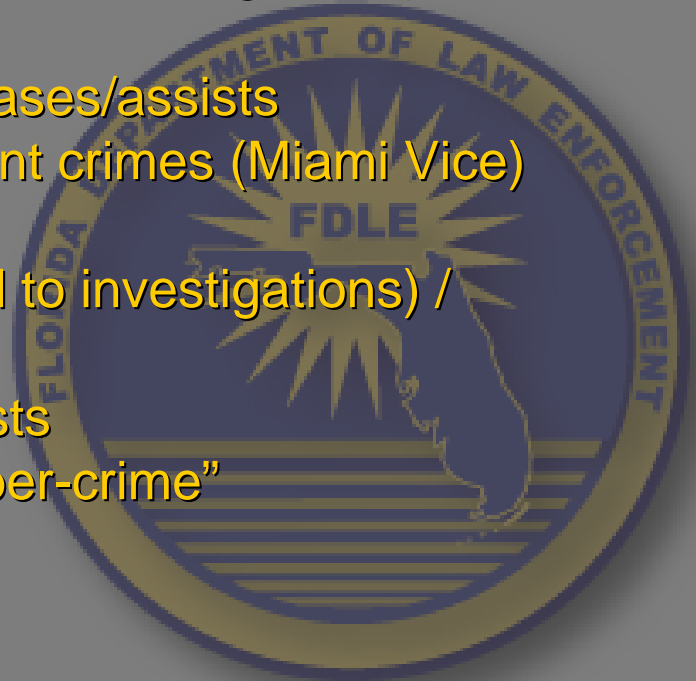
- A new report-
- “Preventing Crime Saves Money” released by the National Crime Prevention Council looked at the overall impact of crime and used cost-benefit analysis to show that investment in crime prevention is an effective way for communities to minimize the high price of crime.

- Estimated annual cost of personal and property crime is \$428 billion a year.
- Victims of crime or their survivors pay \$44 billion as a consequence of murder, rape, robbery, assault, abuse and neglect.
- Insurers pay \$45 billion in crime related cost to their policyholders.
- Employers lose \$5 billion because of violent crime.

*Source: LE Technology 11/05*

# FDLE ~ Then & Now

- 1987** 1,200 members (33% assigned to investigations) /  
\$79.5 m budget  
Worked approximately 1,500 cases/assists  
Crimes include drugs and violent crimes (Miami Vice)
- 2007** 2,000 members (42% assigned to investigations) /  
\$260 m budget  
Worked over 2,200 cases/assists  
Crimes begun transition to “cyber-crime”

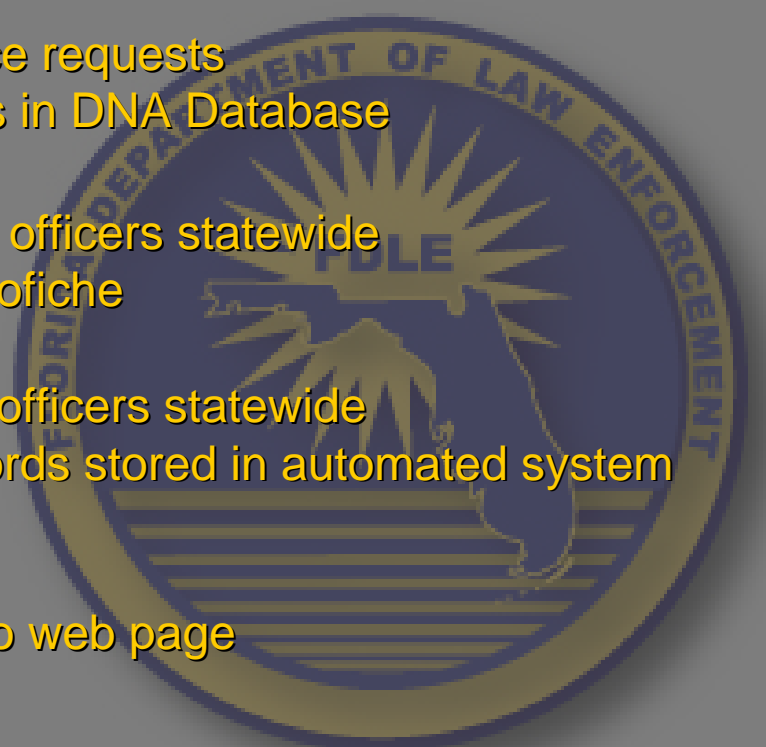




# FDLE ~ Then & Now

- 
- A background image featuring a close-up of a fingerprint scanner on the left and the official seal of the Florida Department of Law Enforcement (FDLE) on the right. The seal is circular with a blue border containing the text 'FLORIDA DEPARTMENT OF LAW ENFORCEMENT'. Inside the seal is a sunburst design with the letters 'FDLE' in the center.
- 1987** Manually input data from arrest fingerprint cards, took up to 3 months to update Florida criminal history files  
2 million criminal history records provided for employment, licensing, public purposes  
2,400 bps network line speed  
13.1 million FCIC transactions per month  
3045 terminals
- 2007** 90% of arrests have fingerprints submitted electronically and criminal history files updated within hours  
5 million+ criminal history records provided for employment, licensing, public purposes  
1,544,000 bps network line speed  
75 million FCIC transactions per month  
74,239 workstations and mobile data terminals

# FDLE ~ Then & Now

- 
- The seal of the Florida Department of Law Enforcement (FDLE) is visible in the background. It is a circular emblem with a blue outer ring containing the text 'FLORIDA DEPARTMENT OF LAW ENFORCEMENT' and 'FDLE'. The center features a sunburst design over a map of Florida, with horizontal lines at the bottom.
- |      |   |
|------|---|
| 1987 | Handled over 44,000 forensic requests<br>No DNA Database  |
| 2007 | Handled over 90,000 forensic service requests<br>375,000 convicted offender samples in DNA Database   |
| 1987 | Oversight of 51,222 criminal justice officers statewide<br>Officer training records kept on microfiche  |
| 2007 | Oversight of 90,000 criminal justice officers statewide<br>Officer training and certification records stored in automated system accessible by agencies |
| 1987 | Beginning the technology boom – no web page<br>U.S. Mail Service  |
| 2007 | FDLE Web site tracks 235,000 “hits” per month (500,000 hits per month to sex offender registry)<br>Email  |

# Expanded Role of Law Enforcement

- Prior to events of 9/11, mission was primarily to safeguard communities through crime prevention and law enforcement efforts.
- Mission of federal, state, and local law enforcement agencies now includes anti-terrorism activities.



# Homeland Security Mission

- Preventing future acts of terrorism and preparing for response operations became a priority for all levels of law enforcement.
- Anti-terrorism role created new responsibilities for federal, state, and local law enforcement.



# State Role in Homeland Security

- Across the country, state police agencies fulfill operational roles and coordinate statewide homeland security planning.
- Homeland security mission includes:
  - Collecting, analyzing and sharing critical information and intelligence.
  - Protecting critical infrastructure and key assets.
  - Collaborating with federal and local law enforcement.
  - Assist in providing equipment, training, and systems.



# Looking Ahead...

- Customer base will continue to grow
- Climate will continue change
- Criminal element will always find new ways to advance





**How will we meet  
the demands of the  
future?**

# **Continue to Empower Customers**

- Web based information / “self-serve” safety
- Virtual training
- Provide additional services and resources
- Advanced public-private partnerships

# Harness Technology

- Biometrics
- Robotics
- Improving business processes to catch-up with technology
- Keep up with private sector and military
- Ethics/privacy considerations
- Capability always exceeds accessibility
- Cannot forget the human factor remains



# Harness Technology

- Human-machine interface
  - Remote iris tracking
  - Ears
  - Saliva
  - Odor surveillance
  - Swagger surveillance
  - Brain scans
  - Universal Sensors
- Global positioning (shoes, bracelets, vehicles)
- RFID on license plates

*Source: Business Week 8/8/05*

# Harness Technology

- Broker technology services in lieu of development
- Computers and storage technology will be faster and will allow us to do things we have not even thought of
- Ability to access and use information in any setting (Wireless and mobile computing)
- Applications will be easier for end users while the technology will grow increasingly complex
- Human – machine interfaces will change, think in terms of speech, gestures and heads up displays
- Technology provides powerful tools, however, we must understand when and how to use them

*Source: Gartner Group*

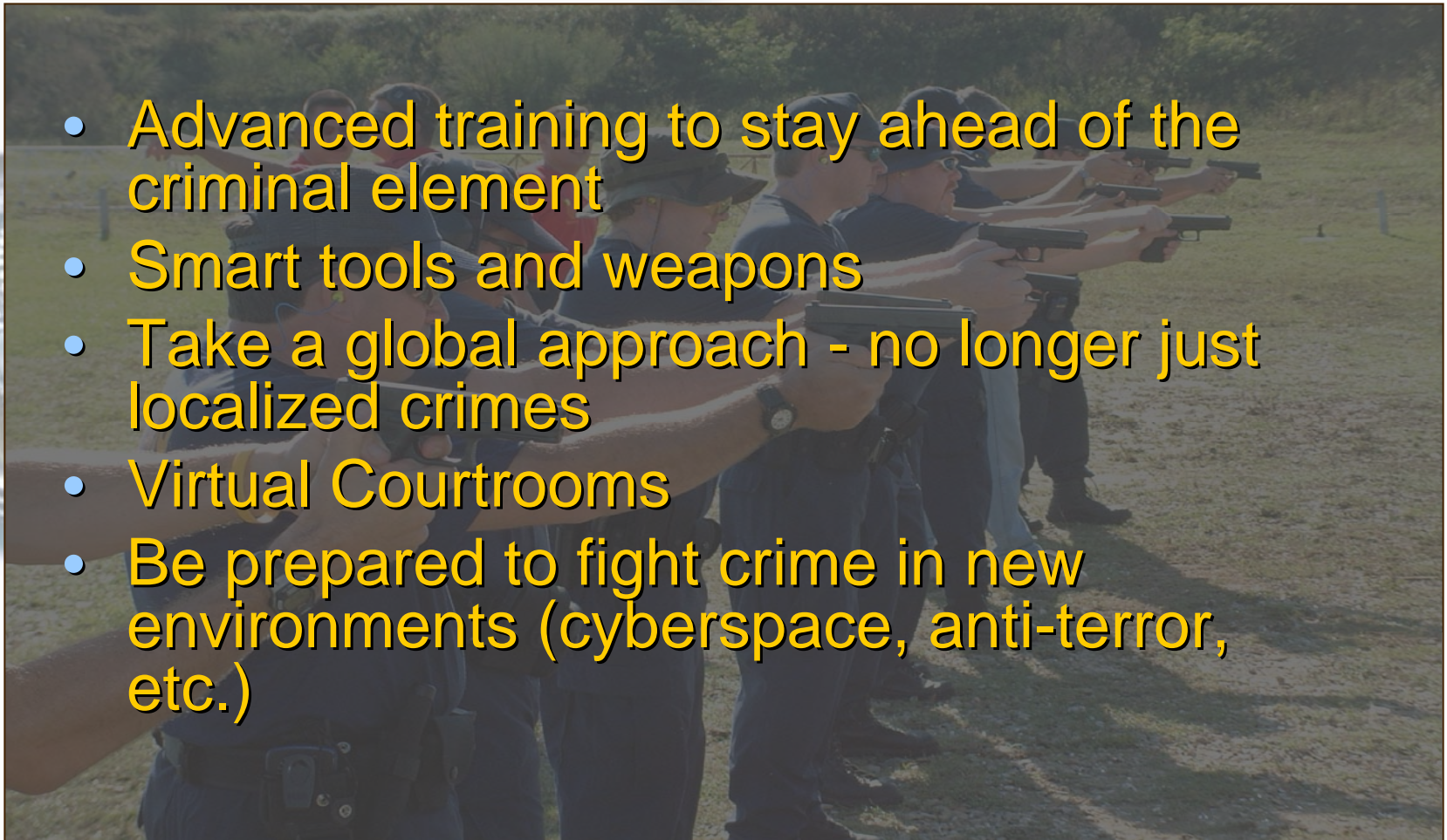
# Anticipate & Forecast

- “Intelligence-led policing” (strategic planning to stay abreast of crime trends)
- Resource allocation
- Improved intelligence gathering and exchange
- Organizational change and new business processes (virtual workplaces, online training)
- Plan for new priorities (budgets, resources)
- “All Information, Anywhere, Anytime”
- Technology coupled with human ingenuity



# Futuristic Crime Fighting

- Advanced training to stay ahead of the criminal element
- Smart tools and weapons
- Take a global approach - no longer just localized crimes
- Virtual Courtrooms
- Be prepared to fight crime in new environments (cyberspace, anti-terror, etc.)



# Futures Working Group

Collaboration between the FBI and the Society of Police Futurists International (PFI) to provide innovation in policing.



“What role will the police play in the future: keepers of the peace, antiterrorism specialists, or community outreach agents?”



*Service ★ Integrity ★ Respect ★ Quality*